

TECHNICAL SPECIFICATION

| KEY SPECS | |
|-------------------------------|------------------------------|
| Length, mm | 1754 |
| Width, mm | 3163(Folding) |
| Height, mm | 1538 |
| No of Row | 4 |
| Seed Hopper capacity, L | 100 |
| Fertilizer Hopper capacity, L | 200 |
| Row spacing, cm | 40, 45, 60, 65, 80, 90 |
| Power requirement at PTO | Min 50 (Upto4 row) |
| Crop | Cotton, Corn, Soya |
| Tyre | V Groove type |
| Weight, kg | 490 |
| Row marker type | Hydraulic |
| Hitch | Cat II |
| Drive | Gear and chain-Sprocket |
| Max. Planting speed | 7.0 kmph |
| Seed spacing (Corn) | 15cm, 20cm, 25cm, 30cm, 45cm |
| Seed spacing (cotton) | 15cm, 20cm, 25cm, 30cm, 45cm |
| Seed spacing(Soybean) | 4cm |

This Implement is also suitable for,



John Deere India Private Limited
3rd floor, Tower-15, Cybercity, Magarpatta City, Hadapsar,
Pune - 411013. Maharashtra. www.JohnDeere.co.in
For more information, please contact our authorised dealer or nearest area office.

- Tractors • Implements
- Harvesters • Finance



Please note: Improvement in the product is a continuous process. Hence the information given in this brochure is subject to change without prior notice. Accessories shown are not the part of standard equipment.

TAKE YOUR CROP FARMING TO NEW HEIGHTS



4WD 5210
50HP 36.9 kW

HIGH SPEED PLANTER

MANY CHALLENGES, ONE PRECISE SOLUTION!

The future of farming lies in harnessing advanced technology. In this dynamic era, many changes in the environment and demand are prompting us to look at better planting solutions. India has a huge potential for mechanization of its crops for better yield and greater profit. And John Deere is ready to deliver a precision planting solution that enables farmers to increase the yield of row crops. The combination of John Deere 5210 tractor and High Speed Planter, is this new age solution.

Agriculture is facing many changes such as decrease in labor availability, increase in labor cost, trend to increasing planting population to drive yield and use expensive hybrid seeds that will drive demand for precision mechanized sowing equipments in India. Shrink in planting window due to variation in monsoon requires higher productive machine.

High speed planter offers a green on green solution to our farmer friends in such a scenario. With the power of John Deere 5210 tractor and the precision in sowing offered with High Speed Planter, you can work for longer hours, apply accurate sowing techniques, and work powerfully with lesser labor too.

Get the speed, strength and precision advantage that will bear the fruit of a golden harvest!

Suitable for crops like



Cotton



Soybean



Corn

90%
Seed
germination

7 km/hr.
Speed

VALUE
FOR
YOU



Save Time



High
Productivity

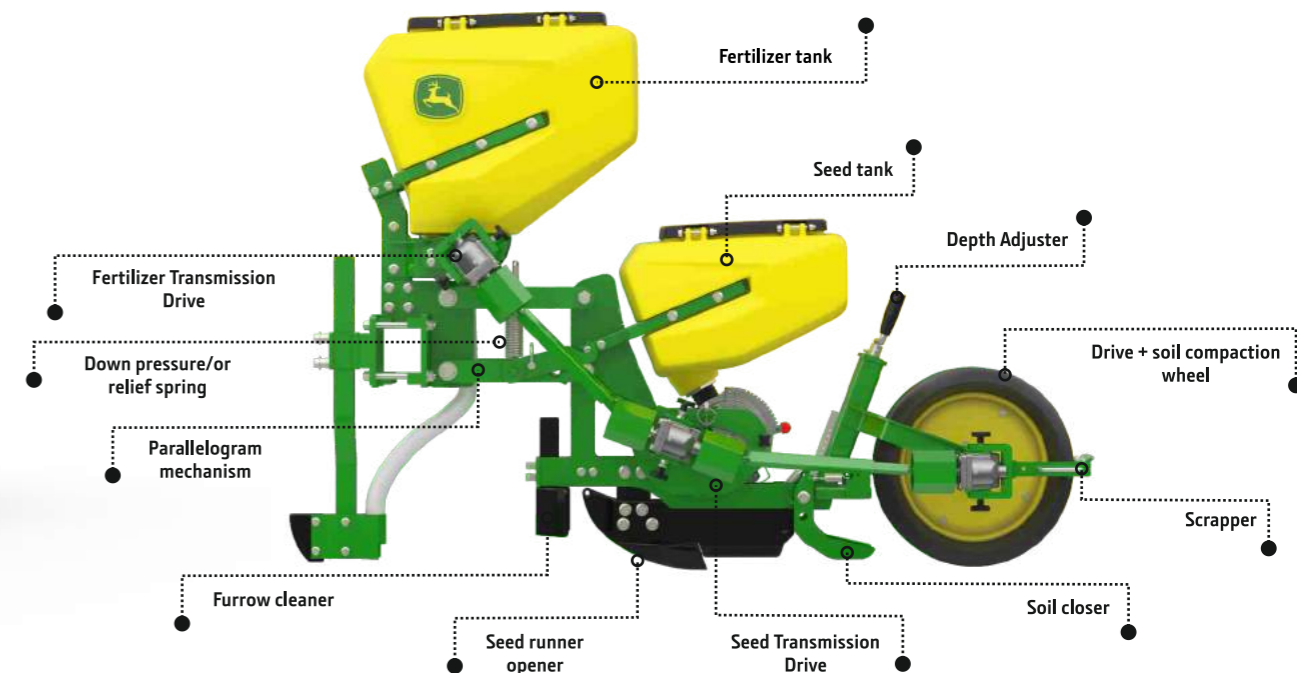


3 ROW PLANTER



4 ROW PLANTER

1. Easy to convert High Speed Planter from 4 row to 3 row
2. This saves time and efforts



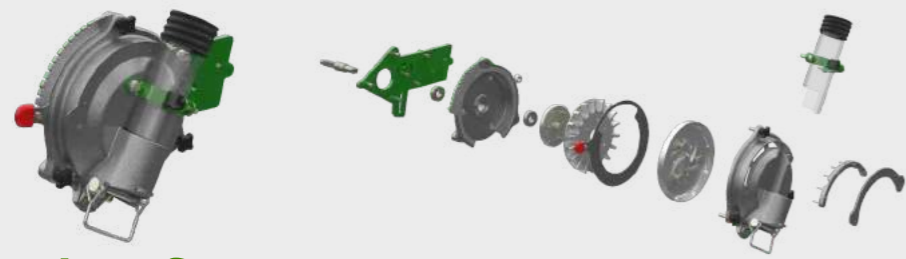
**PRECISION PLANTING
AT HIGH SPEED**

MODULAR ROW UNIT :
To increase or decrease
the width/span



| Feature

- Precision planting due to precision seed meter which can meter at high speed
- Precise depth of planting with uneven & undulating field conditions due to parallelogram mechanism



| Value for you

- Precision in seed picking, one seed per hill at high speed
- Compatible for ungraded seeds
- Agitates seed for proper seed pickup
- Maintain maximum seed population per acre

| Feature

- Modular row unit with independent drive system
- Ease of drive system for seed & fertilizer which required less time for changing/ altering row units.



| Value for you

- Positive power transmission
- Self-alignment of telescope shaft length based on field undulations

**BETTER
GERMINATION**

**ACCURATE PLANTING AT
CONSISTENT DEPTH**



| Feature

- Compaction wheel with "V" groove for better germination as it does not compact the seed

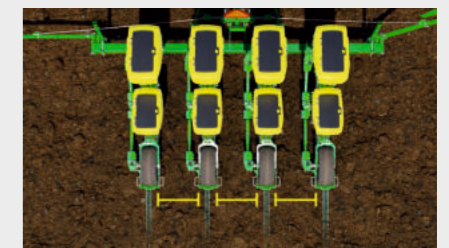


| Value for you

- Tool free setting to flip the marker along with marker frame.
- This avoid the extended/exposed marker during transport.

| Feature

- Marker operation easy & hydraulically actuated
- Unique design for Ease of fertilizer draining
- Less time required for changing/altering row units



| Value for you

- The seed opener follows ground profile/ undulations and maintain accurate depth of planting.
- Multiple level of down pressure setting based on soil hardness.
- Accurate and consistent depth of planting